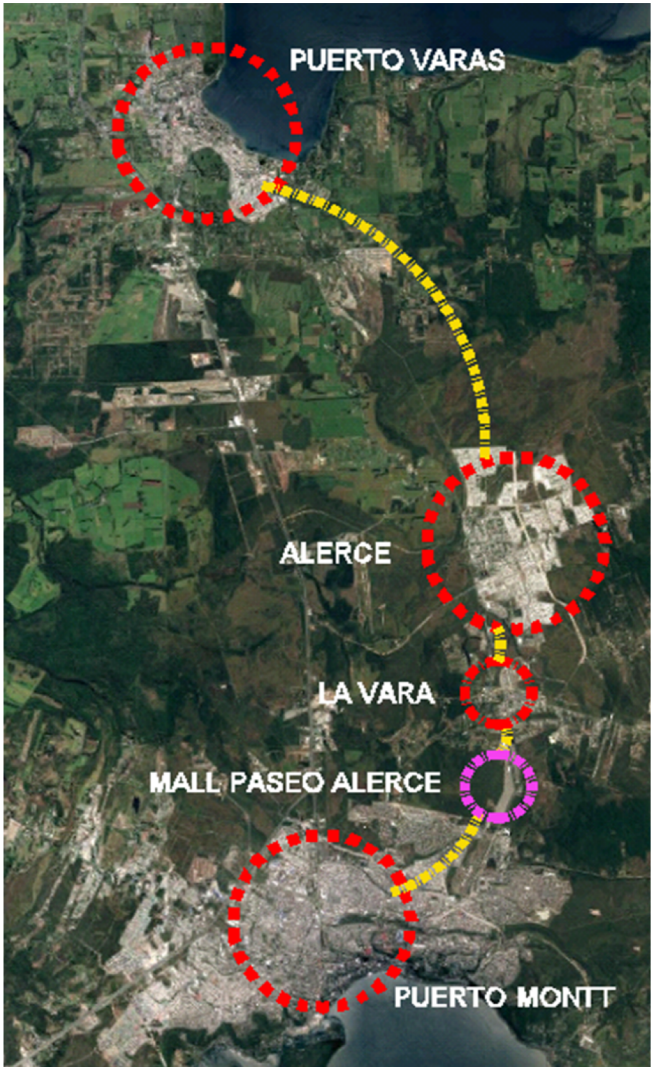




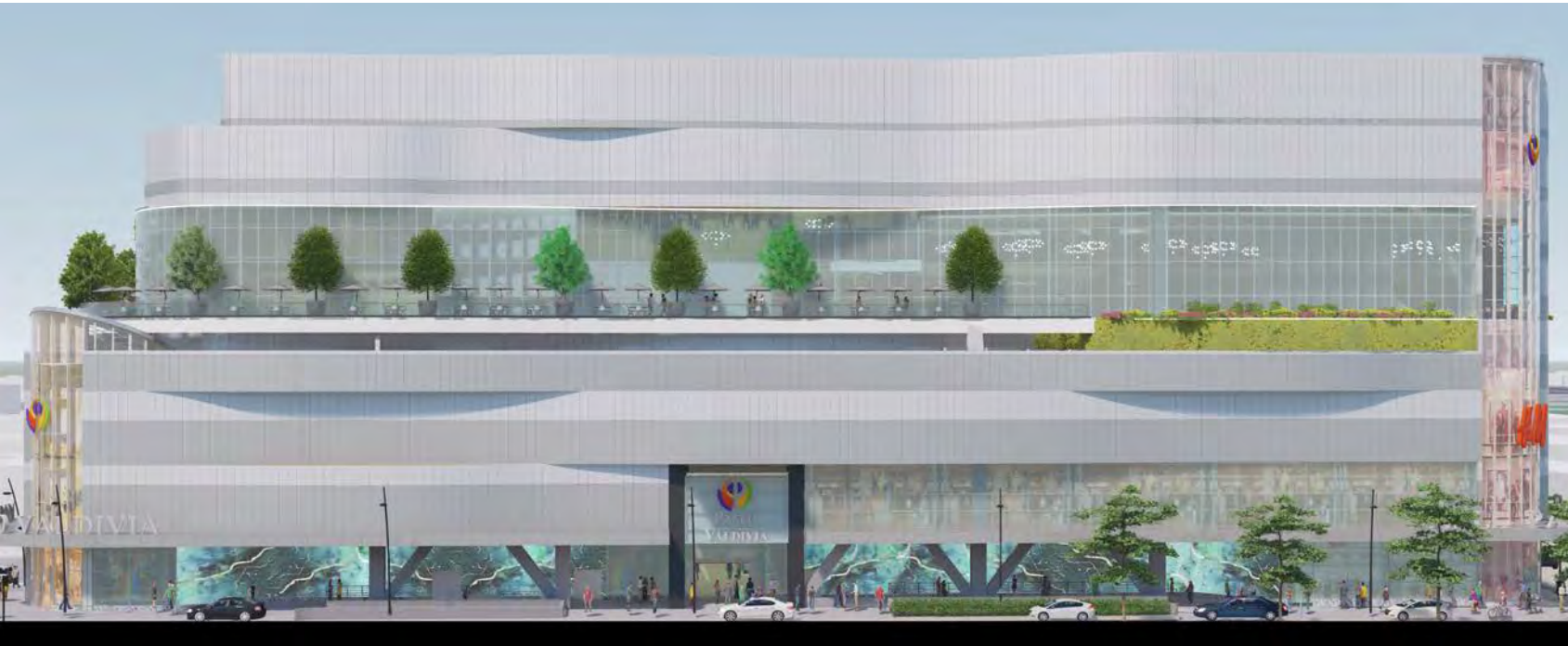
**GRUPO
PASMAR**





88.000 M2 GLA





H&M

O'NEILL

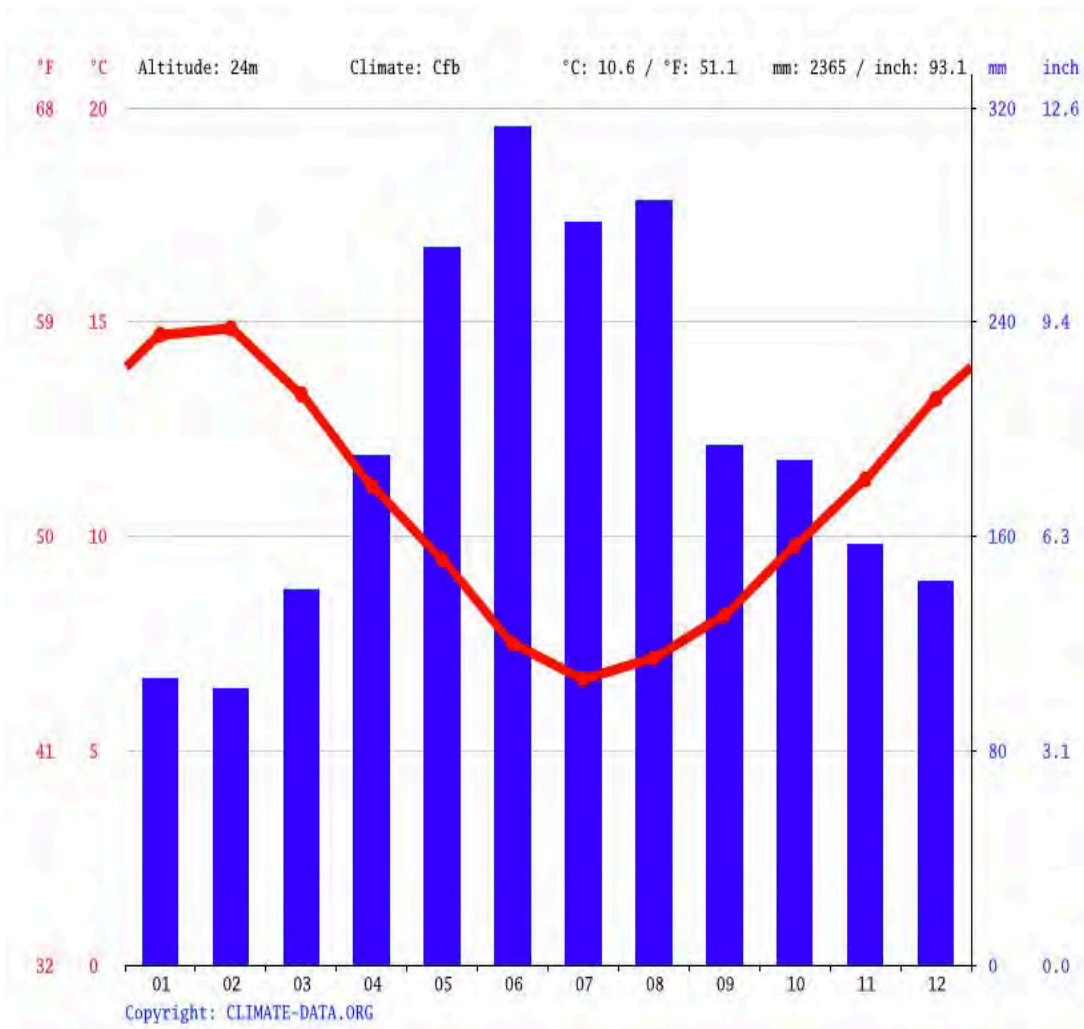
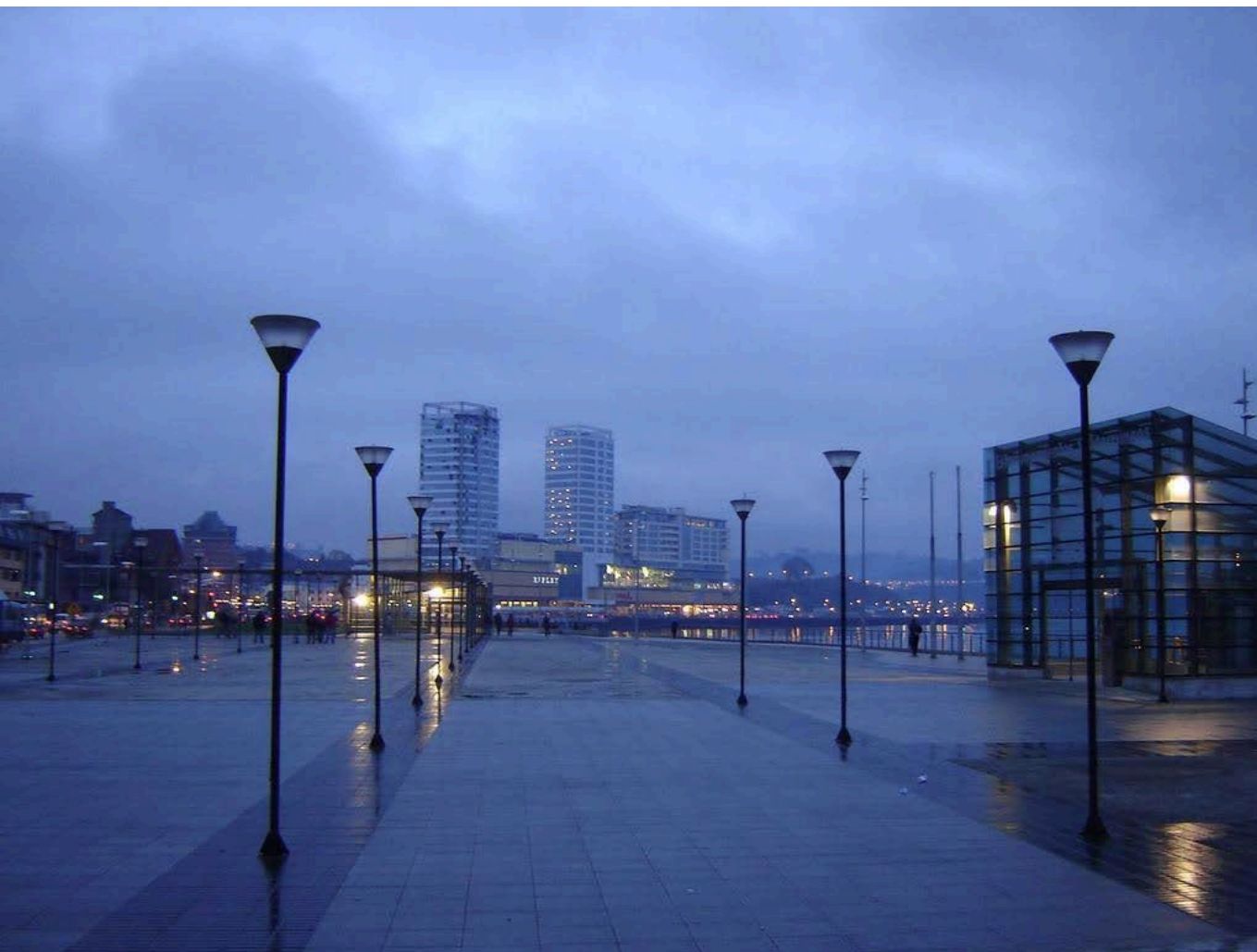


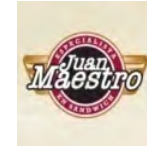
BÖLD

Levi's

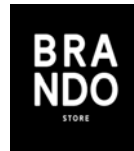
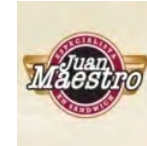
SKECHERS





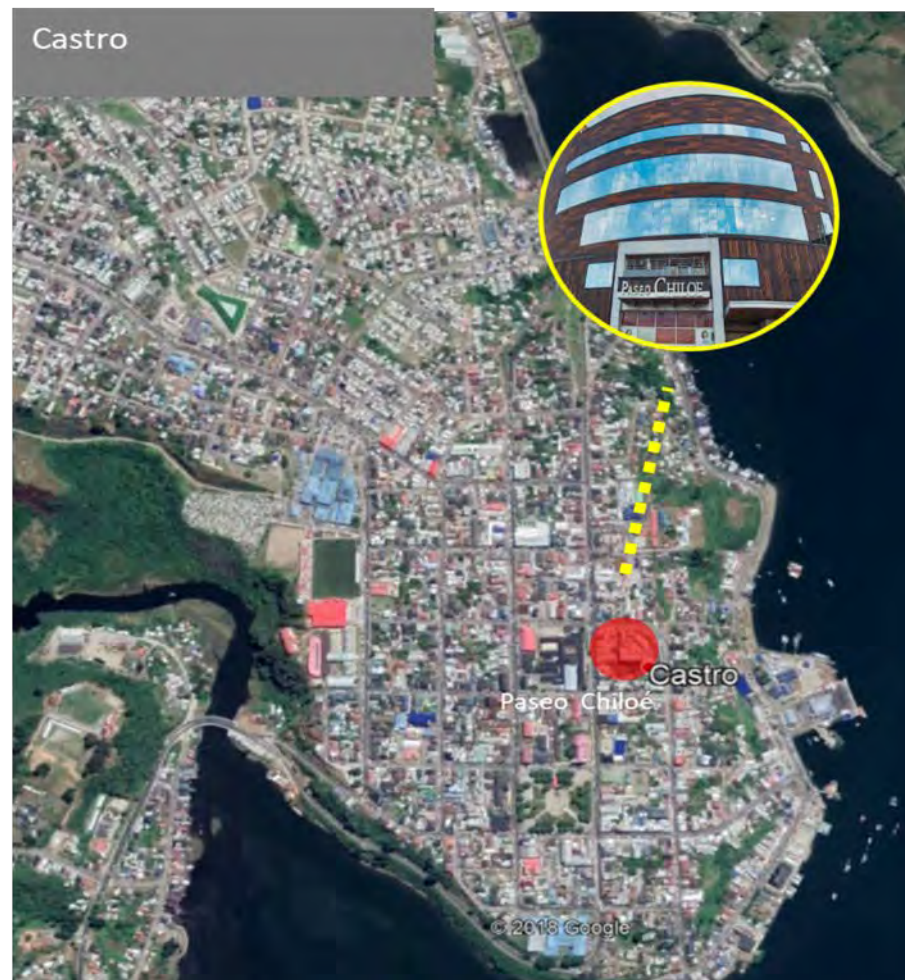


Hush Puppies











Polémico centro comercial abre sus
puertas: "Esto es lo que estábamos
esperando la gente" dice el alcalde

Chilotas entraron aplaudiendo a nuevo mall de Castro



Mey Santamaría desgasta
los 8 millones que gastó
para ser madre



En Finlandia dejan
de enseñar la letra
manuscrita

